

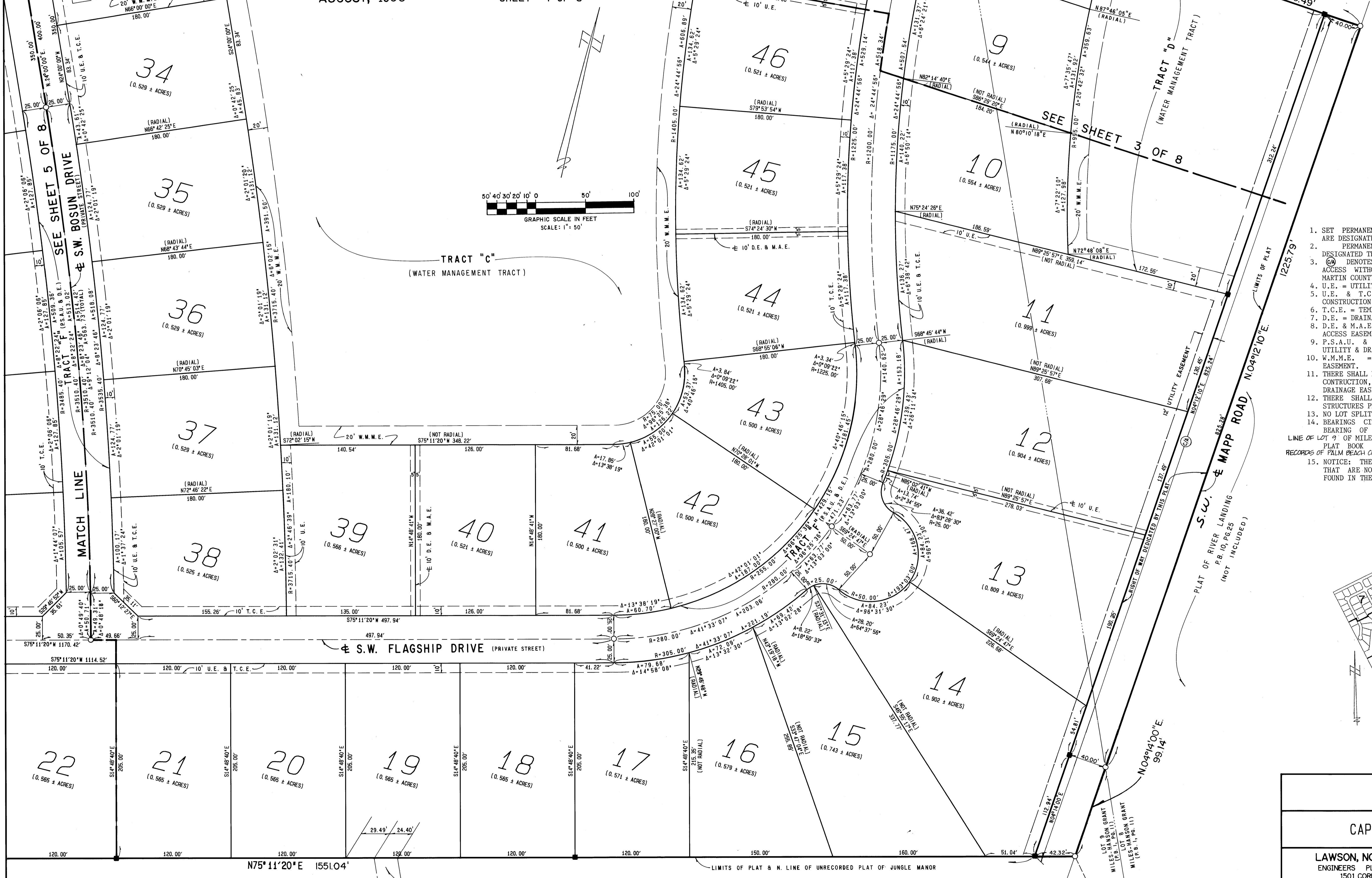
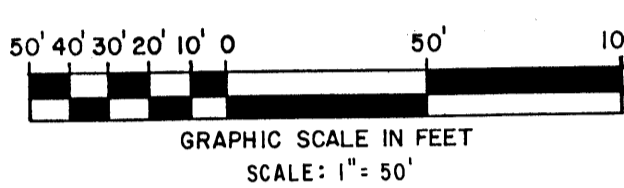
# CAPTAIN'S CREEK

BEING A REPLAT OF PORTIONS OF LOTS 8 AND 9, COMMISSIONERS SUBDIVISION OF THE MILES-HANSON GRANT, PLAT BOOK B, PAGE 59, DADE (NOW MARTIN) COUNTY AND PLAT BOOK 1, PAGE 11, PALM BEACH (NOW MARTIN) COUNTY, FLORIDA.

AUGUST, 1990 SHEET 4 OF 8

MATCH LINE  
SEE SHEET 6 OF 8

MATCH LINE  
SEE SHEET 3 OF 8



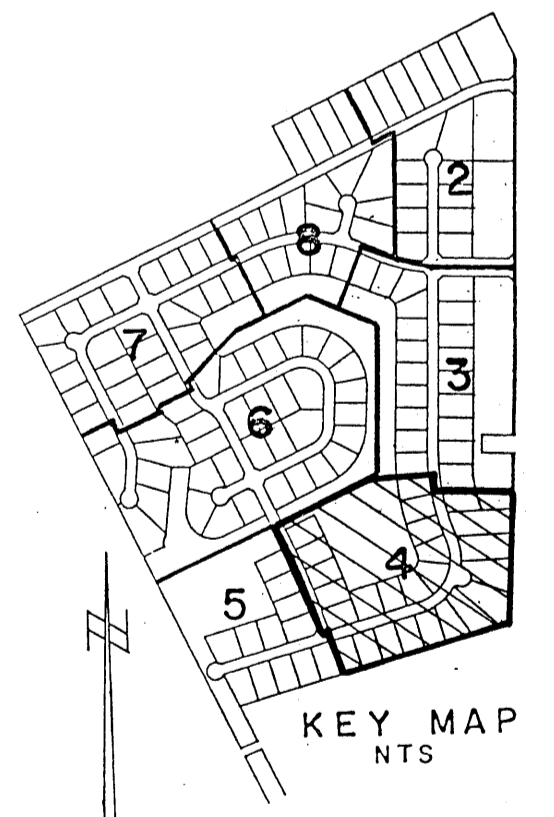
I, MARSHA A. STILLER, CLERK OF THE CIRCUIT COURT OF MARTIN COUNTY, FLORIDA, HEREBY CERTIFY THAT THIS PLAT WAS FILED FOR RECORD IN PLAT BOOK 12, PAGE 72, MARTIN COUNTY, FLORIDA, PUBLIC RECORDS, THIS \_\_\_\_\_ DAY OF \_\_\_\_\_, A.D., 1990.

MARSHA A. STILLER, CLERK  
CIRCUIT COURT  
MARTIN COUNTY, FLORIDA

BY: \_\_\_\_\_  
DEPUTY CLERK

FILE NO. \_\_\_\_\_

- NOTES
1. SET PERMANENT REFERENCE MONUMENTS (P.R.M.'S) ARE DESIGNATED THAT: ■
  2. PERMANENT CONTROL POINTS (P.C.P.'S) ARE DESIGNATED THIS: ○
  3. Ⓞ DENOTES "CONTROL OF ACCESS", NO VEHICULAR ACCESS WITHOUT THE APPROVAL OF THE BOARD OF MARTIN COUNTY COMMISSIONERS.
  4. U.E. = UTILITY EASEMENT.
  5. U.E. & T.C.E. = UTILITY EASEMENT & TEMPORARY CONSTRUCTION EASEMENT.
  6. T.C.E. = TEMPORARY CONSTRUCTION EASEMENT.
  7. D.E. = DRAINAGE EASEMENT.
  8. D.E. & M.A.E. = DRAINAGE EASEMENT & MAINTENANCE ACCESS EASEMENT.
  9. P.S.A.U. & D.E. = PRIVATE STREET, ACCESS, UTILITY & DRAINAGE EASEMENT.
  10. W.M.M.E. = WATER MANAGEMENT MAINTENANCE EASEMENT.
  11. THERE SHALL BE NO BUILDING OR ANY OTHER KIND OF CONSTRUCTION, OR TREES OR SHRUBS PLACED ON DRAINAGE EASEMENT.
  12. THERE SHALL BE NO BUILDING OR OTHER PERMANENT STRUCTURES PLACED ON UTILITY EASEMENTS.
  13. NO LOT SPLITS EXCEPT TO CREATE LARGER LOTS.
  14. BEARINGS CITED HEREON ARE BASED ON AN ASSUMED BEARING OF SOUTH 24°00'00" EAST ALONG THE WEST LINE OF LOT 9 OF MILES-HANSON GRANT PLAT, AS RECORDED IN PLAT BOOK 1, PAGE 11, IN AND FOR THE PUBLIC RECORDS OF PALM BEACH COUNTY, NOW MARTIN COUNTY, FLORIDA.
  15. NOTICE: THERE MAY BE ADDITIONAL RESTRICTIONS THAT ARE NOT RECORDED ON THIS PLAT THAT MAY BE FOUND IN THE PUBLIC RECORDS OF THIS COUNTY.



PLAT OF  
CAPTAIN'S CREEK

LAWSON, NOBLE & ASSOCIATES, INC.  
ENGINEERS PLANNERS TESTING SURVEYORS  
1501 CORPORATE DRIVE SUITE 150  
BOYNTON BEACH, FLORIDA 33426 PH (407) 736-9944

FIELD: MCMILLEN	OFFICE: K.S.	CK'D: K.S.
JOB NO: JB60918	DATE: AUGUST, 1990	DWG. NO: CB6-846
JF: ROBY DC: DC-3	FB: MC-6 PG: 43	SHEET 4 OF 8

THIS INSTRUMENT PREPARED BY KENNETH L. SCRAPP, AT THE OFFICE OF LAWSON, NOBLE & ASSOCIATES, INC., 1501 CORPORATE DRIVE, SUITE 150, BOYNTON BEACH, FLORIDA 33426